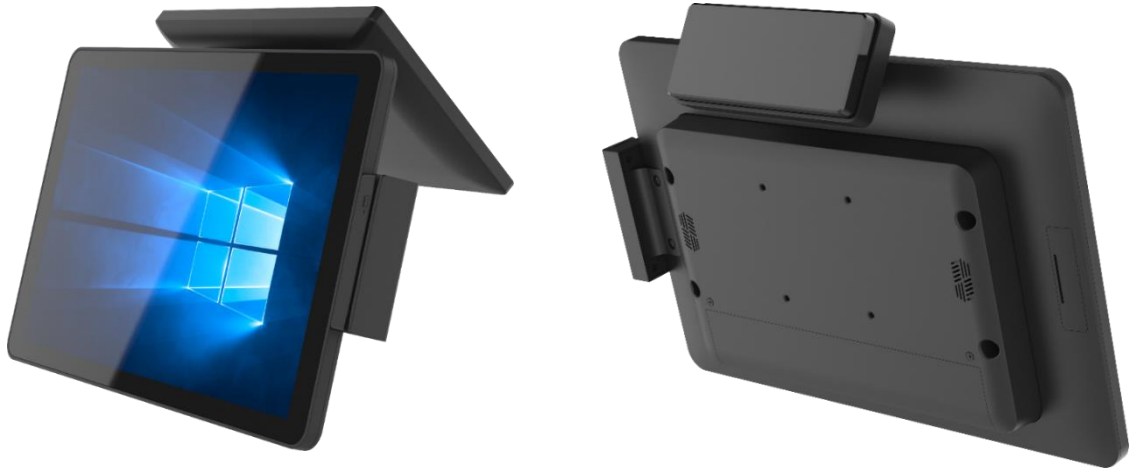


# 15.6" All in One SPOS

## MR1N RK3568

- ◇ Robust All-in-One POS terminal integrated with a wide variety of peripherals.
- ◇ Panel PC structure design to save Total Logistics Cost (TLC).
- ◇ Standard VESA holes to support various stands.
- ◇ Easily upgrade memory and storage by removing 4 screws.
- ◇ Android System

## Features



Stand A



Stand B



Stand D+



Stand E



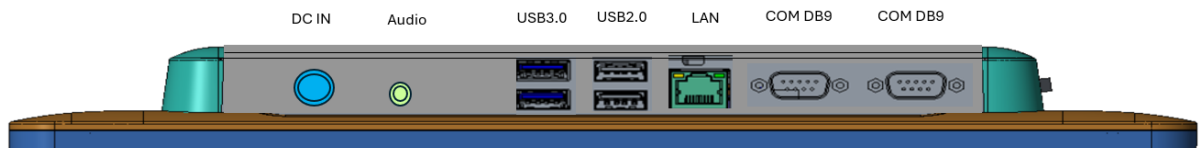
Stand F

Various stands support

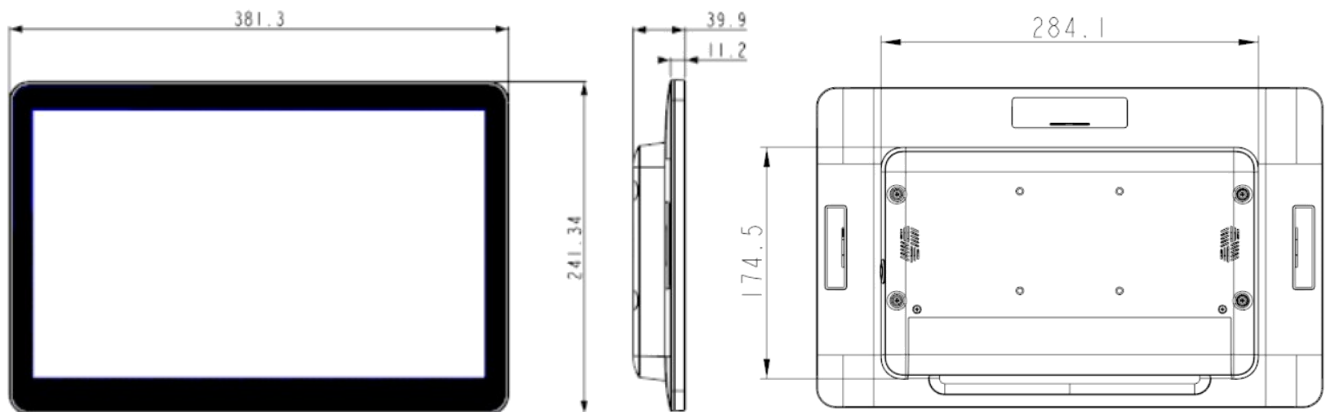
# Product Specifications (MR1N)

<b>Touch Panel</b>	PCT	PCT (Projected Capacitive Touch) Support 10 points Multi-Touch	
<b>LCD Panel</b>	15.6"	15.6" FHD 1920 x 1080 (300 nits)	
<b>CPU</b>	FCBGA	Rockchip RK 3568/ ARM Cortex A55 QUAD- CORE 2.0G	
<b>Memory</b>	RAM	On board DDR4 2G/ 4G	
<b>Storage</b>	eMMC	On board 16G/ 32G/ 64G	
<b>Interface</b>	Power Input	DC12V (Power Jack 4 pin with Lock)	
	Audio Connector	3.5 mm audio jack x 1	
	USB	USB 2.0 x 2 , USB3.0 x 2	
		Option Internal USB 2.0 x 4 (2 x 9 pin header)	
	COM	Powered COM1 : 5V/12V and COM2 : RS232/485 selectable by jumper settings	
LAN	Giga LAN x 1		
<b>Other</b>	Power Switch	Power On / Off switch x 1	
	AC Adaptor	12V	
	VESA Holes	75 x 75 mm	
	Operating Temperature	0 ~ 40 °C ( 32 ~ 104 °F)	
	Storage Temperature	-20 ~ 60 °C ( -4 ~ 140 °F)	
	Dimension	381(W) x 39.9 (D) x 241.3 (H) mm / 15 (W) x 1.6 (D) x 9.5 (H) inch	
	Weight w/o VESA Stand	G.W. 3.6 Kg / 7.9 lbs ; N.W. 2.6 Kg / 5.73 lbs	
	Accessories	Optional MSR , 10.1" 2nd display / USB interface Peripherals	
	Regulation	CE , FCC & LVD	

## I/O Interface (MR1N)



## Dimensions (mm)



All information contained in this document is subject to change without prior notice.

10F, No. 90, Sec 1, Xintai 5th Rd., XiZhi Dist., New Taipei City 221, Taiwan.

■ TEL: +886.2.2696-9292 ■ FAX: +886.2.2696-9393 ■ E-mail: sales@ebn.com.tw

[www.ebn.com.tw](http://www.ebn.com.tw)

20241108